

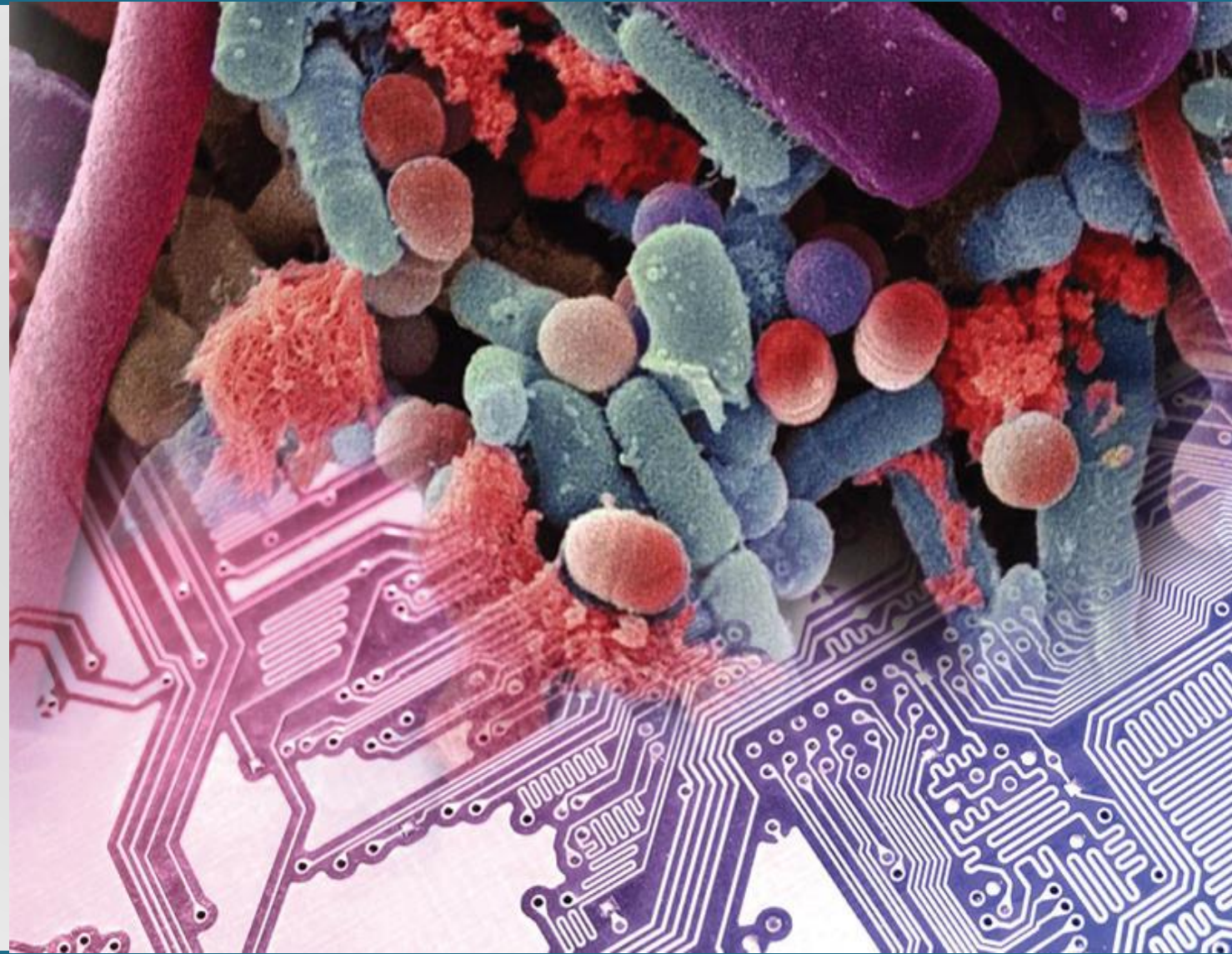
ORGANICA

Design of Greenfield Organica FCR with Dynamic Model



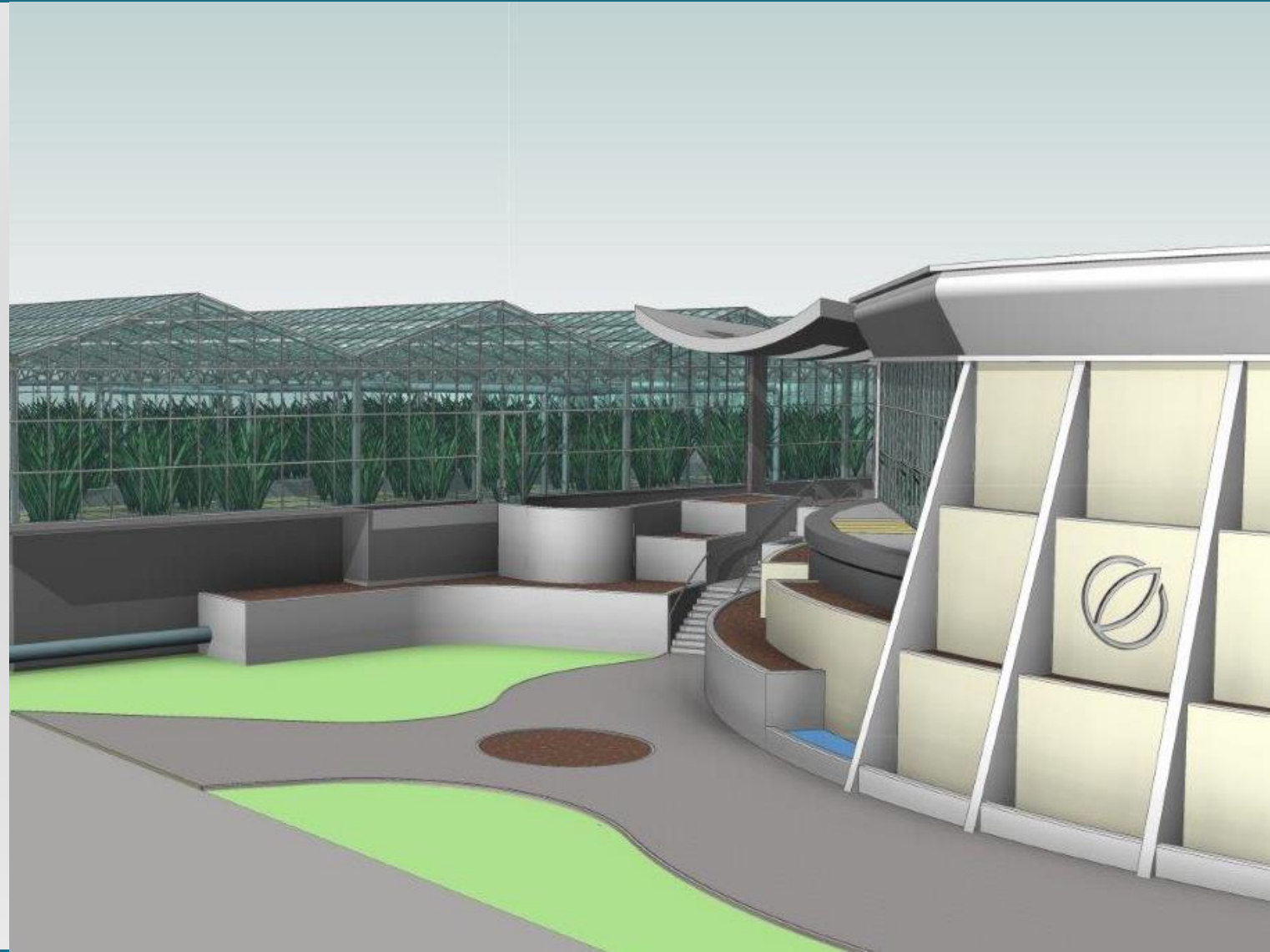
Typical Design Procedures

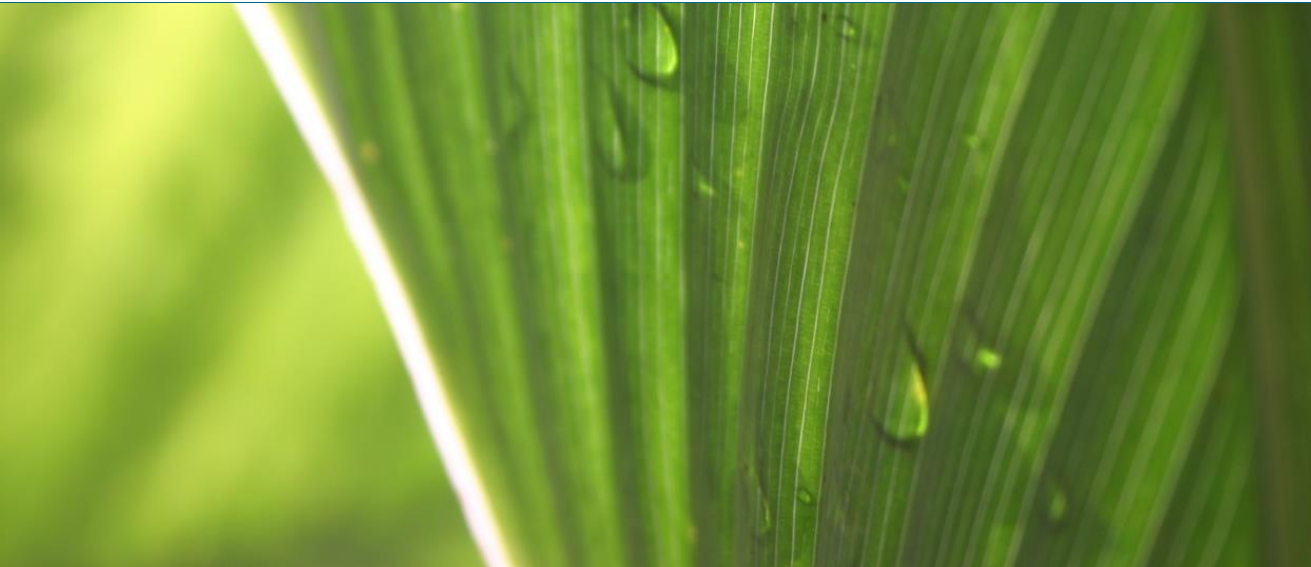
- Steady-state model assumptions
 - DWA procedure A131 (Germany)
 - 10 State Standards (United States)
 - CPHEEO (India)
- Dynamic mathematical models (ASM1, ASM2d, ASM3, etc.) integrated into software packages
 - GPS-X
 - Biowin
 - Simba
 - STOAT
 - West



Advantages of Dynamic Models

- ✓ Detailed analysis about treatment performance under dynamic conditions
- ✓ Performance of the real plant can be predicted well with a standard parameter set
- ✓ Result is a robust design, where dynamic conditions were also taken into account





www.OrganicaWater.com